

SMT X-ray ETA-8200

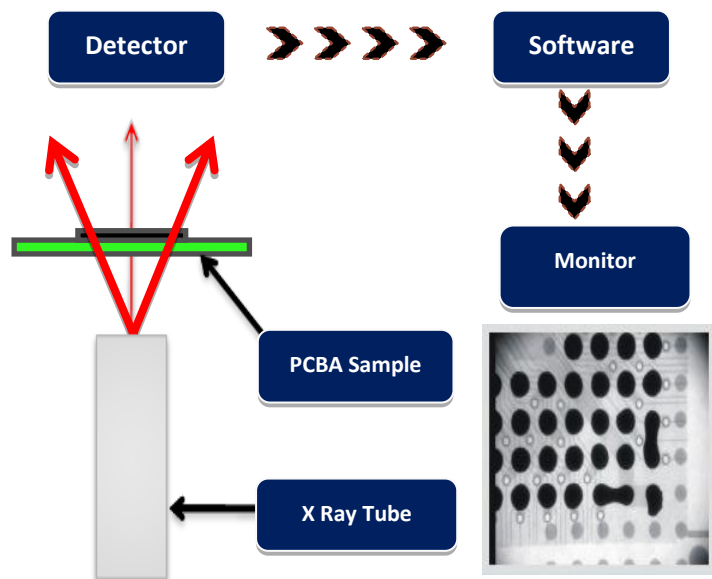
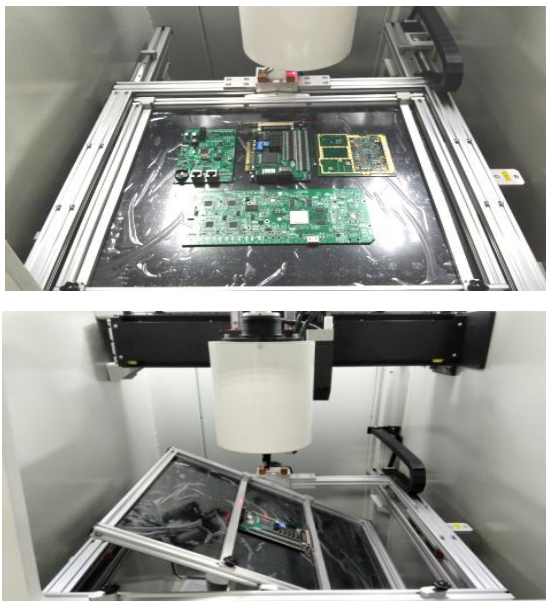


Introduce:

The ETA-8200 machine is designed to provide high resolution x-ray imaging primarily for the electronics industry. This versatile system is effective for many applications within the PCB manufacturing process. This includes BGA, CSP, QFN, Flip Chip, COB and the wide range of SMT components. The ETA-8200 is a powerful support tool for process development, process monitoring and refinement of the rework operation. Supported by a powerful and easy to use software interface, ETA-8200 is capable of addressing small and large volume factory requirements.

Features:

- 1.90kV 5µm closed X-ray tube, 4/2" image intensifier with 2 mega pixels CCD camera
- 2.Multi-function workstation with ±60° tilt and X-Y multi-axis movement
- 3.X-ray tube & detector automatic lifting and descending, with convenient target point positioning system
- 4.Multi-function DXI image processing system, CNC programmable detection
- 5.Max. loading area 510mm*420mm, max. inspection area 435mm*385mm, with 600X Magnification

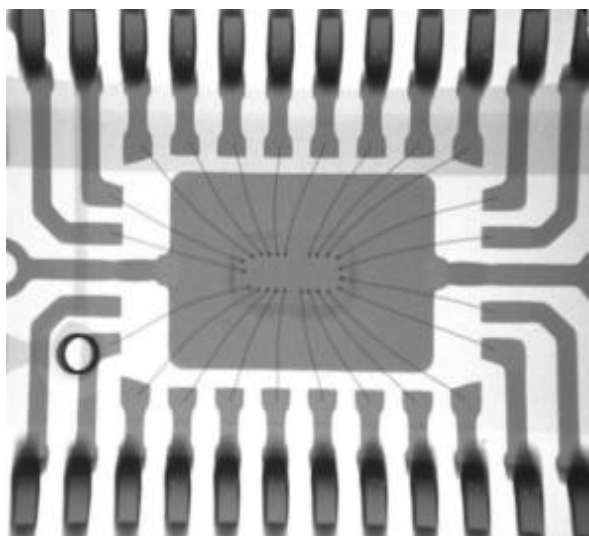


Application:

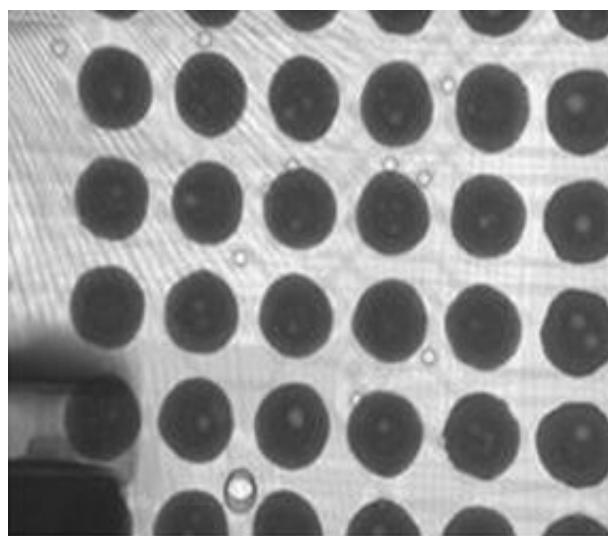
SMT, BGA, CSP, Flip Chip, LED Detection, Semiconductor, Packaging components, Battery Industry, Electronic components, Automotive parts,

Photo-voltaic, Aluminium Die-casting, Moulding Plastic, Ceramics, other special industries.

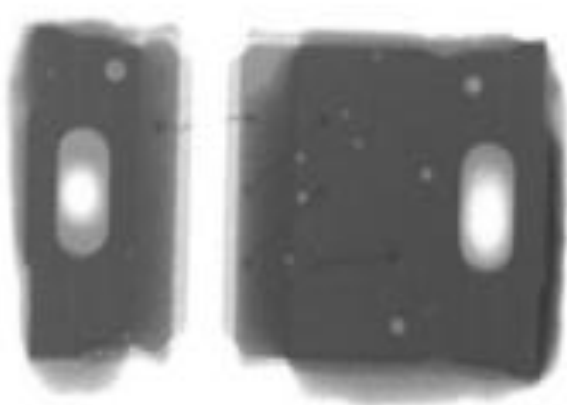
X-Ray Inspection Images:



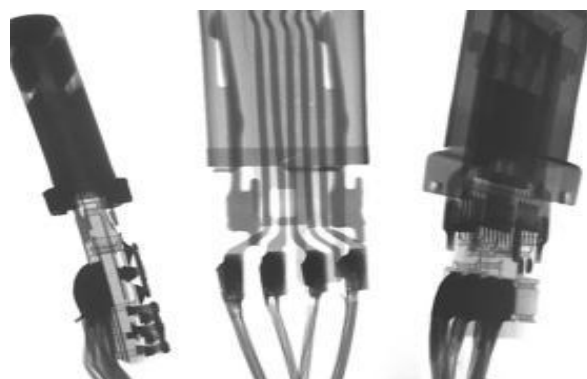
IC Wire



BGA Voids



Components



Connectors/Cables

Specification:

Item	Model	ETA-8200
X-Ray Tube	Max. Voltages, Type	90kV, Closed
	Power Consumption	8W
	Focal Spot Size	5 μm
	Motion range (Up and Down)	150mm
	Magnification	600X
Detector	Intensifier	4"/2" (FPD Optional)
	Resolution	77/110 LP/cm
	Camera	2 Mega Pixel CCD
	Motion range (Up and Down)	290mm
System Computer	Operating System	Industrial PC, Win 7, i7 Processor
	Monitor	22" LCD
Software	User Interface	ETA Multi-function DXI image processing system

Working Platform	Max. Loading Area	510mm×420mm
	Max. Inspection Area	435mm×385mm
	Max. Loading Weight	10kg
	Movement Control	Joysticks, Mouse and Keypads
	Table Tilting Angle	±60°
Navigation	Camera	HD Camera, Laser point
Axis	Manipulator	5-axis with X / Y / Z1 / Z2 / T
Equipment Features	Power Supply	AC 110~220V (±10%) 50Hz, 1.0kW
	Outline Dimensions	1080(W)×1180(D)×1730(H)mm
	System Weight	1150 kg
Optional Accessories	1.Barcode Scanner; 2.Dimension Measurement Gauge	
Warranty	One year warranty, free replacement the parts due to original manufacturer's defect, but expect of man-made damages and force majeure	

X-Ray Safety: All X-ray machines manufactured by ETA Technology meet the FDA-CDRH Regulation CFR 21 1020.40 Subchapter J for cabinet x-ray systems. The FDA - CDRH standard for cabinet x-ray systems states that radiation emission will not exceed. 5millirem a /hr.2"from any external surface. Our machines (Leakage <math><1\mu\text{Sv/h}</math>) are typically 5-10 times less than the international standards.

Thanks for choosing ETA.

ETA looks forward to win-win cooperation.