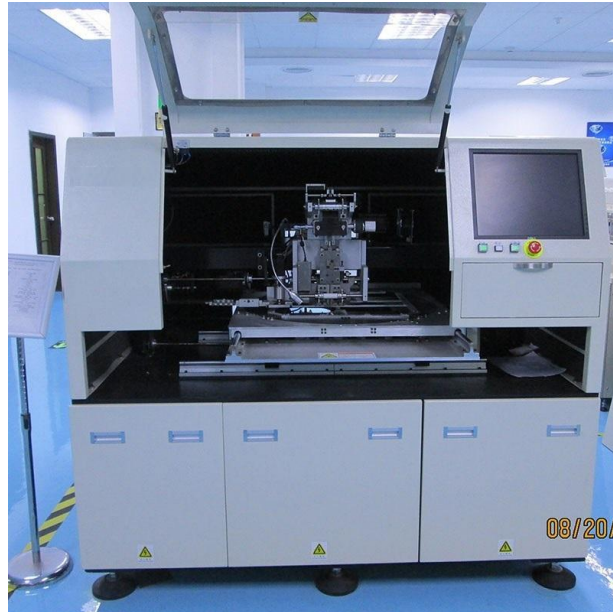
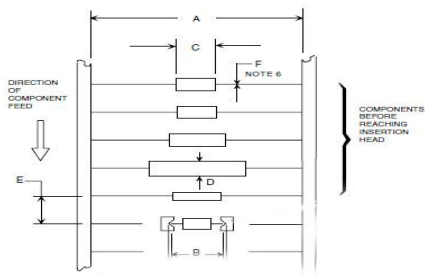


ETA Axial Insertion Machine S4020

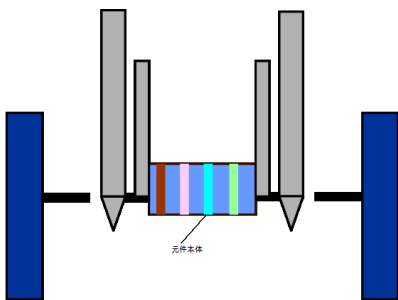


Introduce:

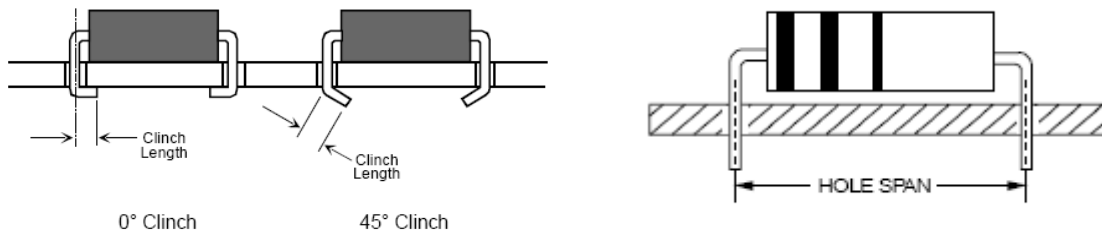
- Expandable from 20 stations
- Speeds up to 20,000/hour
- Low maintenance feeder technology
- Dual part detection – two parts in same chain slot.
- Insertion Directions: 0°,90°,180°,270°
- Jumper Wire Feeder Support



- Neighbor components parallel distance E(pitch)=5.0mm
- Tape width: 52mm
- Max Component Body Length: C=16mm , Resistor:1/8W-2W
- Axial Lead Component Kind: Diode、Resistor、Capacitor and so on.
- Max body diameter D=5.0mm



Insertion head work principal



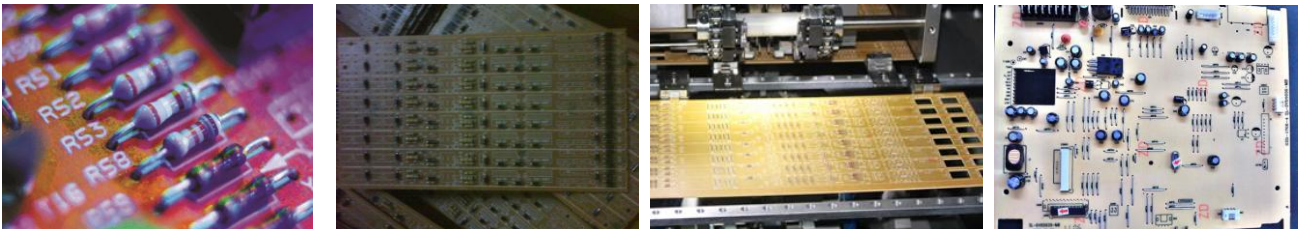
Hole Span: 5~20mm

JW Span: 5~30mm

Hole Diameter = Lead Diameter + 0.48mm ±0.08mm.(0.019") (0.003")

Clinch lead angle is adjustable in a range (0°- 45°). Clinch lead length is adjustable from 1.28mm (0.050") to 1.80mm (0.071") and is measured from the center of the insertion hole to the end of the lead.

Application:



Specification:

Model	S4020
Actual Speed	24000 CPH
Feeders	20
Accuracy	±0.05mm
Plug-in Angle	0,90,180,270°
Lead Spacing	5-20mm
JW Diameter	0.5-0.8mm
Component Diameter	Max 10mm
Component Height	20mm
PCB Size	50*50-450*450mm
Cuting Lead Length	1.2-2.2mm
Cuting Lead Angle	5-35°
Air Pressure	4.5~6Kg/cm2
Power Supply	AC:220±10%,50/60HZ,2Kw
Dimension(mm)	L1700*W1500*H1800
Weight	Approx:2100kg

* The data is obtained under ambient temperature of 25 °C and humidity of 60%

Customer:





Thanks for choosing ETA.
ETA looks forward to win-win cooperation.